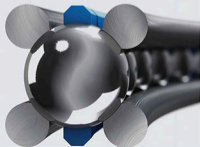




**CLI BEARINGS
CO., LTD.**



Wire Race Bearings



Major Features 主要特点

1. Free selection of ball pitch, with smallest mounting space and high precision; simple structure and direct integration into your mating structure.
滚动体间距可以自由选择，具有最小的安装空间和超高的精密性，结构简单且容易拆装，可以很容易的直接装配使用。
 2. The standard diameter of Raceways can be designed according to the requirements of users' machines. The ball guided polyamide ball cage can be divided into several segments. But the segmented strip cage runs very smoothly and silently and compensates length differences caused by high temperature.
滚动套圈的标准直径可以根据用户实际使用要求设计，滚动体引导的尼龙保持器可以分成几段，每段运转都很平滑、安静，还可以弥补由于高温所造成的长度变化。
 3. Free selection of bearing rings and rolling elements' diameter; The rolling elements structures can be ball, roller or combined.
轴承套圈和滚动体可以根据实际使用情况自由搭配，滚动体结构可以是球轴承、滚子轴承或者是组合。
 4. Compared to conventional slewing bearing, wire race bearing have following decisive advantages: highest rotary accuracy, good corrosion resistance, heavy impact loadings, light weight and rare maintenance and so on. 与传统回转轴承相比有着决定性的优势，比如较高的旋转精度、较好的耐腐蚀性能、承受较高的冲击负荷、较轻的重量、很少的维护等。
 5. The material of the rings can also be freely chosen, because the rolling element don't run on the bearing rings, but run on the wire steel. So the material of bearing rings and parts are nearly no restriction in combination. Chrome steel, Aluminium version and other non-ferrous metals, cast iron or other special material could be selected. Even if in one set bearing, the material can be mixed. (eg: rings use aluminium, gear ring use other steel) 轴承的套圈材质也可以根据应用情况自由选择，由于其滚动体不是在轴承套圈上滚动，而是在轴承套圈里的钢丝绳上运动，所以其材质选择和零件的材质组合几乎不受限制，可以是普通钢材，也可以是铝合金或者其他有色金属，铸铁或者其他特殊材料，甚至在一套轴承里，材质也可以混合（如：套圈用铝合金，齿轮采用其他材料）。
 6. The dimension of our wire race bearing from ID 40mm to ID 2500mm, on principle, all can be designed with outer gear, inner gear, and special gear type.
我们的钢丝绳跑道轴承尺寸范围可以从内径40mm到内径2500mm；原则上都可以设计成外齿、内齿和特殊的齿轮。
 7. CUI wire race bearing must be your most economically and achievable choose. Because it has simple structure and all parts can be changed easily, eg, steel wire, rolling element, Spacing Mock, even bearing rings can be used again. CUI公司的钢丝绳轴承也是最佳经济、最实用的选择。因为钢丝绳轴承的结构简单，它的各部分相成可以很方便的更换，例如：钢丝绳、滚动体、隔架块，包括套圈都可以重新使用。
- We are always preparing for offering new bearing application design to world wide customers, producing custom-design bearing and offer you our best service.
我们随时准备为全球客户提供新应用设计、为用户量身定做轴承等服务。

Application 应用范围



CLB's Wire race bearings are widely applied in military equipment because they fulfill the following terrible conditions: quick, convenient mantle, dismantle and maintenance; little space, simple structure, easily operation, and higher reliability, etc.

CLB 的钢丝跑道轴承广泛应用于军事设备，能够满足军事设备要求安装、拆卸、维护快捷快速，空间紧凑，结构简单、使用操作简便，较高的耐用性等比较苛刻的要求。

It is applied in the rotary location of radar, It can withstand heavy loadings. Small space is enough to use.

应用于雷达旋转工作部位，能够承受较大的载荷，较小的空间就可以安装使用。

Wire race bearing are widely used in textile machinery, especially used in circular knitting machines.

钢丝跑道轴承在纺织机械行业应用非常广泛，尤其是针织行业大量使用的针织大圆机。普通采用钢丝跑道轴承。Wire race bearing are also widely used in large sized medical equipment industry which have highest requirements concerning easy run, precision, low-noise and low energy consumption.

钢丝跑道轴承在要求精密度及噪音要求，比较严格的大型医疗器械行业也得到了广泛的应用，它可以以非常低的噪音光滑运行，只消耗很少的电能，并且运转精度比较高。

Wire race bearing are also widely used in food industries (eg, vacuum-filler) due to its space saving design and low price the vacuum-filler is small and economical.

钢丝跑道轴承在食品工业领域也有很广泛的应用，比如在真空包装机上的使用，采用钢丝跑道轴承，可以节省很大的空间，且价格低廉，使食品机械既小巧又经济。

Temperature range 温度要求范围

工作环境要求

Continuous operation: -40°C to +100°C

设计要求 -40°C到+100°C

short time operation max. +120°C

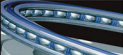
短时间可超过这个温度范围最高可以达到+120°C

Rotational speed: with grease lubrication max 10m/s

之润滑下运转速度要求：脂润滑最高10M/S

Working with oil lubrication: max 12m/s

油润滑下转速要求：油润滑最高12M/S



Basic Structures 基本结构形式

1. Single row four point contact ball series; heavy loadings, high precision. 单排四点接触球系列：用于高负荷、高精度。

(1) Double profile with ground races 圆双断面



WBH series



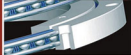
WBL series



WBM series

(2) Rectangular profile 矩形剖面





2. Single row three point contact ball series: heavy loadings, high precision and easy to mount.

单排三点接触球系列：用于较高负荷、较高精度、易组装。



3. Cross roller series: heavy loading and high accuracy. 交叉滚子系列：用于重负荷，高精度。



4. Three row rollers series. Heavy loadings and complex torque. 三排滚子系列，用于高负荷，承受力矩复杂的环境。

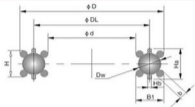
5. Double row rollers series. Heavy loadings, high accuracy and complex torque. 双排滚子系列，用于重负荷、高精度、承载力矩复杂的环境。





Wire Race Bearing

WBL series



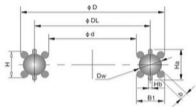
尺寸范围 (mm) Size Range	钢球尺寸 (mm) Ball Diameter	钢丝尺寸 (mm) Wire Race Diameter	轴承尺寸 (mm) Bearing Dimensions				保持器尺寸 (mm) Cage Dimensions	
			d	D	H	B1	Ha	Hb
WBL 70-145	5	1.5	DL-81	DL-81	5.9	5.9	7.6	1.5
WBL 150-220	6	2.0	DL-81	DL-81	7.4	7.4	8.6	1.6
WBL 225-295	8	2.5	DL-81	DL-81	9.2	9.2	10.6	2.0
WBL 300-390	9	3.0	DL-81	DL-81	10.6	10.6	11.6	2.5
WBL 400-790	12	4.0	DL-81	DL-81	14.1	14.1	15.0	2.5
WBL 800-1180	15	5.0	DL-81	DL-81	18.4	18.4	19.6	3.0
WBL 1200-1500	20	6.0	DL-81	DL-81	22.6	22.6	24.2	3.5

型号		轴承外形尺寸			额定负荷		重量	型号		轴承外形尺寸			额定负荷		重量
CLI Part No.	Other Part No.	Boundary Dimension (mm)			Cr	Cor	lg	CLI Part No.	Other Part No.	Boundary Dimension (mm)			Cr	Cor	lg
		d	D	DL						d	D	DL			
WBL-70	LEL1.5-0070	64.1	75.9	70	4	5	0.03	WBL-190	LEL2.0-190	182.6	197.4	190	10	24	0.11
WBL-75	LEL1.5-0075	69.1	80.9	75	4	5	0.03	WBL-195	LEL2.0-195	187.6	202.4	195	10	24	0.11
WBL-80	LEL1.5-0080	74.1	85.9	80	4	6	0.03	WBL-200	LEL2.0-200	192.6	207.4	200	10	25	0.12
WBL-85	LEL1.5-0085	79.1	90.9	85	4	6	0.03	WBL-205	LEL2.0-205	197.6	212.4	205	10	26	0.12
WBL-90	LEL1.5-0090	84.1	95.9	90	4	6	0.04	WBL-210	LEL2.0-210	202.6	217.4	210	10	26	0.12
WBL-95	LEL1.5-0095	89.1	100.9	95	4	7	0.04	WBL-215	LEL2.0-215	207.6	222.4	215	11	27	0.13
WBL-100	LEL1.5-0100	94.1	105.9	100	4	7	0.04	WBL-220	LEL2.0-220	212.6	227.4	220	11	28	0.14
WBL-105	LEL1.5-0105	99.1	110.9	105	4	7	0.04	WBL-225	LEL2.5-0225	215.8	234.2	225	16	49	0.22
WBL-110	LEL1.5-0110	104.1	115.9	110	4	8	0.04	WBL-230	LEL2.5-0230	220.8	239.2	230	16	51	0.22
WBL-115	LEL1.5-0115	109.1	120.9	115	4	8	0.04	WBL-235	LEL2.5-0235	225.8	244.2	235	16	52	0.22
WBL-120	LEL1.5-0120	114.1	125.9	120	4	9	0.04	WBL-240	LEL2.5-0240	230.8	249.2	240	16	53	0.22
WBL-125	LEL1.5-0125	119.1	130.9	125	4	9	0.05	WBL-245	LEL2.5-0245	235.8	254.2	245	17	54	0.22
WBL-130	LEL1.5-0130	124.1	135.9	130	5	9	0.05	WBL-250	LEL2.5-0250	240.8	259.2	250	17	55	0.23
WBL-135	LEL1.5-0135	129.1	140.9	135	5	10	0.05	WBL-255	LEL2.5-0255	245.8	264.2	255	17	56	0.23
WBL-140	LEL1.5-0140	134.1	145.9	140	5	10	0.05	WBL-260	LEL2.5-0260	250.8	269.2	260	17	58	0.23
WBL-145	LEL1.5-0145	139.1	150.9	145	5	10	0.06	WBL-265	LEL2.5-0265	255.8	274.2	265	17	59	0.24
WBL-150	LEL2.0-150	142.6	157.4	150	9	19	0.09	WBL-270	LEL2.5-0270	260.8	279.2	270	17	59	0.24
WBL-155	LEL2.0-155	147.6	162.4	155	9	19	0.09	WBL-275	LEL2.5-0275	265.8	284.2	275	17	60	0.25
WBL-160	LEL2.0-160	152.6	167.4	160	10	20	0.09	WBL-280	LEL2.5-0280	270.8	289.2	280	17	62	0.25
WBL-165	LEL2.0-165	157.6	172.4	165	10	20	0.09	WBL-285	LEL2.5-0285	275.8	294.2	285	17	63	0.26
WBL-170	LEL2.0-170	162.6	177.4	170	10	21	0.10	WBL-290	LEL2.5-0290	280.8	299.2	290	18	64	0.27
WBL-175	LEL2.0-175	167.6	182.4	175	10	22	0.10	WBL-295	LEL2.5-0295	285.8	304.2	295	18	66	0.29
WBL-180	LEL2.0-180	172.6	187.4	180	10	23	0.10	WBL-300	LEL3.0-300	289.4	310.6	300	23	93	0.42
WBL-185	LEL2.0-185	177.6	192.4	185	10	23	0.10	WBL-310	LEL3.0-310	299.4	320.6	310	23	97	0.50



Wire Race Bearing

WBL series



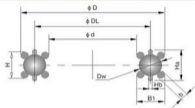
尺寸范围 (mm) Size Range	钢球尺寸 (mm) Ball Diameter	钢丝尺寸 (mm) Wire Race Diameter	轴承尺寸 (mm) Bearing Dimensions				保持器尺寸 (mm) Cage Dimensions	
DL	Dw (φ)	b (φ)	d	D	H	B1	Ha	Hb
WBL 70-145	5	1.5	DL-81	DL-81	5.9	5.9	7.6	1.5
WBL 150-220	6	2.0	DL-81	DL-81	7.4	7.4	8.6	1.6
WBL 225-295	8	2.5	DL-81	DL-81	9.2	9.2	10.6	2.0
WBL 300-390	9	3.0	DL-81	DL-81	10.6	10.6	11.6	2.5
WBL 400-790	12	4.0	DL-81	DL-81	14.1	14.1	15.0	2.5
WBL 800-1180	15	5.0	DL-81	DL-81	18.4	18.4	19.6	3.0
WBL 1200-1500	20	6.0	DL-81	DL-81	22.6	22.6	24.2	3.5

型号		轴承外形尺寸			额定负荷		重量	型号		轴承外形尺寸			额定负荷		重量
CLI Part No.	Other Part No.	Boundary Dimension (mm)			Rated Loading (kN)		Weight	CLI Part No.	Other Part No.	Boundary Dimension (mm)			Rated Loading (kN)		Weight
		d	D	DL	Cr	Cor	kg			d	D	DL	Cr	Cor	kg
WBL-320	LEL3-320	309.4	330.6	320	24	100	0.50	WBL-570	LEL4-570	555.9	584.1	570	48	230	1.40
WBL-330	LEL3-330	319.4	340.6	330	24	104	0.50	WBL-580	LEL4-580	565.9	594.1	580	50	234	1.40
WBL-340	LEL3-340	329.4	350.6	340	24	106	0.60	WBL-590	LEL4-590	575.9	604.1	590	50	239	1.50
WBL-350	LEL3-350	339.4	360.6	350	25	109	0.60	WBL-600	LEL4-600	585.9	614.1	600	50	243	1.50
WBL-360	LEL3-360	349.4	370.6	360	25	113	0.70	WBL-610	LEL4-610	595.9	624.1	610	51	245	1.50
WBL-370	LEL3-370	359.4	380.6	370	25	116	0.70	WBL-620	LEL4-620	605.9	634.1	620	51	251	1.50
WBL-380	LEL3-380	369.4	390.6	380	25	119	0.80	WBL-630	LEL4-630	615.9	644.1	630	51	255	1.60
WBL-390	LEL3-390	379.4	400.6	390	26	122	0.90	WBL-640	LEL4-640	625.9	654.1	640	51	259	1.60
WBL-400	LEL4-606	385.9	414.1	400	43	161	1.00	WBL-650	LEL4-650	635.9	664.1	650	52	264	1.60
WBL-410	LEL4-410	395.9	424.1	410	44	165	1.02	WBL-660	LEL4-660	645.9	674.1	660	52	268	1.70
WBL-420	LEL4-420	405.9	434.1	420	44	170	1.05	WBL-670	LEL4-670	655.9	684.1	670	52	272	1.70
WBL-430	LEL4-430	415.9	444.1	430	44	174	1.10	WBL-680	LEL4-680	665.9	694.1	680	53	276	1.70
WBL-440	LEL4-440	425.9	454.1	440	45	178	1.10	WBL-690	LEL4-690	675.9	704.1	690	53	280	1.80
WBL-450	LEL4-450	435.9	464.1	450	45	182	1.10	WBL-700	LEL4-700	685.9	714.1	700	53	285	1.80
WBL-460	LEL4-460	445.9	474.1	460	46	186	1.10	WBL-710	LEL4-710	695.9	724.1	710	54	289	1.80
WBL-470	LEL4-470	455.9	484.1	470	46	191	1.10	WBL-720	LEL4-720	705.9	734.1	720	54	293	1.90
WBL-480	LEL4-480	465.9	494.1	480	46	195	1.20	WBL-730	LEL4-730	715.9	744.1	730	54	297	1.90
WBL-490	LEL4-490	475.9	504.1	490	47	199	1.20	WBL-740	LEL4-740	725.9	754.1	740	54	301	2.00
WBL-500	LEL4-500	485.9	514.1	500	47	203	1.20	WBL-750	LEL4-750	735.9	764.1	750	55	305	2.00
WBL-510	LEL4-510	495.9	524.1	510	47	207	1.20	WBL-760	LEL4-760	745.9	774.1	760	55	310	2.00
WBL-520	LEL4-520	515.9	544.1	520	48	216	1.30	WBL-770	LEL4-770	755.9	784.1	770	55	314	2.10
WBL-540	LEL4-540	525.9	554.1	540	49	220	1.30	WBL-780	LEL4-780	765.9	794.1	780	56	318	2.10
WBL-550	LEL4-550	535.9	564.1	550	49	222	1.30	WBL-790	LEL4-790	775.9	804.1	790	56	322	2.10
WBL-560	LEL4-560	545.9	574.1	560	49	226	1.40	WBL-800	LEL3-800	781.6	818.4	800	63	426	3.40



Wire Race Bearing

WBL series



尺寸范围 (mm) Size Range	钢球尺寸 (mm) Ball Diameter	钢丝尺寸 (mm) Wire Race Diameter	轴承尺寸 (mm) Bearing Dimensions				保持器尺寸 (mm) Cage Dimensions	
DL	Dw (φ)	b (φ)	d	D	H	B1	Ha	Hb
WBL 70-145	5	1.5	DL-81	DL-81	5.9	5.9	7.6	1.5
WBL 150-220	6	2.0	DL-81	DL-81	7.4	7.4	8.6	1.6
WBL 275-295	8	2.5	DL-81	DL-81	9.2	9.2	10.6	2.0
WBL 300-390	9	3.0	DL-81	DL-81	10.6	10.6	11.6	2.5
WBL 400-790	12	4.0	DL-81	DL-81	14.1	14.1	15.0	2.5
WBL 800-1180	15	5.0	DL-81	DL-81	18.4	18.4	19.6	3.0
WBL 1200-1506	20	6.0	DL-81	DL-81	22.6	22.6	24.2	3.5

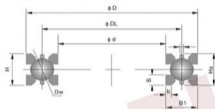
型号		轴承外形尺寸			额定负荷		重量	型号		轴承外形尺寸			额定负荷		重量
CLI Part No.	Other Part No.	Boundary Dimension (mm)			Rated Loading (KN)		Weight	CLI Part No.	Other Part No.	Boundary Dimension (mm)			Rated Loading (KN)		Weight
		d	D	DL	Cr	Cor	kg			d	D	DL	Cr	Cor	kg
WBL-810	LELS-910	791.6	826.4	830	83	433	3.50	WBL-1200	LELS-1200	1177.4	1222.6	1200	121	738	7.50
WBL-820	LELS-826	801.6	836.4	820	84	437	3.50	WBL-1220	LELS-1220	1197.4	1242.6	1220	122	764	7.60
WBL-830	LELS-836	811.6	846.4	830	84	444	3.60	WBL-1240	LELS-1240	1217.4	1262.6	1240	123	774	7.80
WBL-840	LELS-846	821.6	856.4	840	84	447	3.60	WBL-1260	LELS-1260	1237.4	1282.6	1260	124	790	7.90
WBL-850	LELS-856	831.6	866.4	850	85	454	3.70	WBL-1280	LELS-1280	1257.4	1302.6	1280	124	800	8.00
WBL-860	LELS-866	841.6	876.4	860	85	461	3.80	WBL-1300	LELS-1300	1277.4	1322.6	1300	125	816	8.20
WBL-870	LELS-876	851.6	886.4	870	85	464	3.80	WBL-1320	LELS-1320	1297.4	1342.6	1320	126	826	8.30
WBL-880	LELS-886	861.6	896.4	880	86	471	3.90	WBL-1340	LELS-1340	1317.4	1362.6	1340	126	837	8.50
WBL-890	LELS-896	871.6	906.4	890	86	474	4.00	WBL-1360	LELS-1360	1337.4	1382.6	1360	127	852	8.60
WBL-900	LELS-906	881.6	916.4	900	87	481	4.00	WBL-1380	LELS-1380	1357.4	1402.6	1380	128	863	8.80
WBL-920	LELS-926	901.6	936.4	920	87	492	4.10	WBL-1400	LELS-1400	1377.4	1422.6	1400	129	878	8.90
WBL-940	LELS-946	921.6	956.4	940	88	502	4.20	WBL-1420	LELS-1420	1397.4	1442.6	1420	129	889	9.10
WBL-960	LELS-966	941.6	976.4	960	89	512	4.20	WBL-1440	LELS-1440	1417.4	1462.6	1440	130	899	9.20
WBL-980	LELS-986	961.6	996.4	980	89	523	4.30	WBL-1460	LELS-1460	1437.4	1482.6	1460	130	915	9.40
WBL-1000	LELS-1000	981.6	1018.4	1000	90	536	4.40	WBL-1480	LELS-1480	1457.4	1502.6	1480	131	926	9.60
WBL-1020	LELS-1020	1001.6	1038.4	1020	91	547	4.50	WBL-1500	LELS-1500	1477.4	1522.6	1500	132	941	9.80
WBL-1040	LELS-1040	1021.6	1058.4	1040	91	557	4.50								
WBL-1060	LELS-1060	1041.6	1078.4	1060	92	567	4.60								
WBL-1080	LELS-1080	1061.6	1098.4	1080	93	578	4.70								
WBL-1100	LELS-1100	1081.6	1118.4	1100	93	588	4.80								
WBL-1120	LELS-1120	1101.6	1138.4	1120	94	598	4.80								
WBL-1140	LELS-1140	1121.6	1158.4	1140	95	612	4.90								
WBL-1160	LELS-1160	1141.6	1178.4	1160	95	622	5.00								
WBL-1180	LELS-1180	1161.6	1198.4	1180	96	633	5.00								



Wire Race Bearing

WBM series

尺寸范围 (mm) Size Range	钢球尺寸 (mm) Ball Diameter		钢丝尺寸 (mm) Wire Race Dia		轴承尺寸 (mm) Bearing Dimensions				保持器尺寸 (mm) Cage Dimensions	
	DL	mm inch	b	B	d	D	H	B1	Ha	Hb
	DL									
WBM 100 - 1500	9, 525	3/8	3.0	4.0	DL-B1	DL+B1	13	11	12.6	2.5



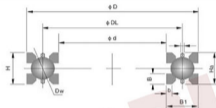
型号		轴承外形尺寸			额定负荷			重量	型号		轴承外形尺寸			额定负荷			重量
CLI Part No.	Other Part No.	Boundary Dimension (mm)			Rated Loading (KN)		Wg	Other Part No.	Other Part No.	Boundary Dimension (mm)			Rated Loading (KN)		Wg		
		d	D	DL	Cr	Cor				d	D	DL	Cr	Cor			
WBM-100	LER3-100	89	111	100	15	32	0.19	WBM-210	LER3-210	199	221	210	21.7	67.2	0.36		
WBM-105	LER3-105	94	116	105	15.4	33.6	0.20	WBM-215	LER3-215	204	226	215	22	68.8	0.40		
WBM-110	LER3-110	99	121	110	15.7	35.2	0.21	WBM-220	LER3-220	209	231	220	22.3	70.4	0.41		
WBM-115	LER3-115	104	126	115	16.1	36.8	0.21	WBM-225	LER3-225	214	236	225	22.5	72	0.42		
WBM-120	LER3-120	109	131	120	16.4	38.4	0.22	WBM-230	LER3-230	219	241	230	22.8	73.6	0.43		
WBM-125	LER3-125	114	136	125	16.8	40	0.23	WBM-235	LER3-235	224	246	235	23	75.2	0.44		
WBM-130	LER3-130	119	141	130	17.1	41.6	0.24	WBM-240	LER3-240	229	251	240	23.2	76.8	0.45		
WBM-135	LER3-135	124	146	135	17.4	43.2	0.25	WBM-245	LER3-245	234	256	245	23.5	78.4	0.46		
WBM-140	LER3-140	129	151	140	17.7	44.8	0.26	WBM-250	LER3-250	239	261	250	23.7	80	0.47		
WBM-145	LER3-145	134	156	145	18.1	46.4	0.27	WBM-255	LER3-255	244	266	255	24	81.6	0.47		
WBM-150	LER3-150	139	161	150	18.4	48	0.28	WBM-260	LER3-260	249	271	260	24.2	83.2	0.48		
WBM-155	LER3-155	144	166	155	18.7	49.6	0.29	WBM-265	LER3-265	254	276	265	24.4	84.8	0.49		
WBM-160	LER3-160	149	171	160	19	51.2	0.30	WBM-270	LER3-270	259	281	270	24.7	86.4	0.50		
WBM-165	LER3-165	154	176	165	19.3	52.8	0.31	WBM-275	LER3-275	264	286	275	24.9	88	0.51		
WBM-170	LER3-170	159	181	170	19.6	54.4	0.32	WBM-280	LER3-280	269	291	280	25.1	89.6	0.52		
WBM-175	LER3-175	164	186	175	19.9	56	0.33	WBM-285	LER3-285	274	296	285	25.3	91.2	0.53		
WBM-180	LER3-180	169	191	180	20.1	57.6	0.34	WBM-290	LER3-290	279	301	290	25.6	92.8	0.54		
WBM-185	LER3-185	174	196	185	20.4	59.2	0.34	WBM-295	LER3-295	284	306	295	25.8	94.4	0.55		
WBM-190	LER3-190	179	201	190	20.7	60.8	0.35	WBM-300	LER3-300	289	311	300	26	96	0.56		
WBM-195	LER3-195	184	206	195	21	62.4	0.36	WBM-310	LER3-310	299	321	310	26.4	99.2	0.58		
WBM-200	LER3-200	189	211	200	21.2	64	0.37	WBM-320	LER3-320	309	331	320	26.8	102.4	0.60		
WBM-205	LER3-205	194	216	205	21.5	65.6	0.38	WBM-330	LER3-330	319	341	330	27.2	105.6	0.61		



Wire Race Bearing

WBM series

尺寸范围 (mm) Size Range	钢球尺寸 (mm) Ball Diameter		钢球尺寸 (mm) Wire Race Dia		轴承尺寸 (mm) Bearing Dimensions				保持器尺寸 (mm) Cage Dimensions		
	DL	mm	Inch	b	B	d	D	H	B1	Ha	Hb
WBM 100 - 1500	9.525	3/8	3.0	4.0	DL-B1	DL+B1	13	11	12.6	2.5	



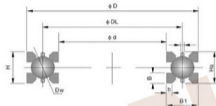
型号		轴承外形尺寸			额定负荷		重量	型号		轴承外形尺寸			额定负荷		重量
CLI Part No.	Other Part No.	Boundary Dimension (mm)			Rated Loading (KN)		kg	CLI Part No.	Other Part No.	Boundary Dimension (mm)			Rated Loading (KN)		kg
		d	D	DL	Cr	Cor				d	D	DL	Cr	Cor	
WBM-340	LER3-0340	329	351	340	27.7	108.8	0.63	WBM-500	LER3-0500	549	571	560	35.5	179.2	1.07
WBM-350	LER3-0350	339	361	350	28.1	112	0.65	WBM-570	LER3-0570	559	581	570	35.9	182.4	1.09
WBM-360	LER3-0360	349	371	360	28.5	115.2	0.67	WBM-580	LER3-0580	569	591	580	36.2	185.6	1.11
WBM-370	LER3-0370	359	381	370	28.9	118.4	0.69	WBM-590	LER3-0590	579	601	590	36.6	188.8	1.13
WBM-380	LER3-0380	369	391	380	29.2	121.6	0.71	WBM-600	LER3-0600	589	611	600	36.9	192	1.15
WBM-390	LER3-0390	379	401	390	29.6	124.8	0.73	WBM-610	LER3-0610	599	621	610	37.1	195.2	1.17
WBM-400	LER3-0400	389	411	400	30	128	0.74	WBM-620	LER3-0620	609	631	620	37.4	198.4	1.19
WBM-410	LER3-0410	399	421	410	30.4	131.2	0.76	WBM-630	LER3-0630	619	641	630	37.7	201.6	1.21
WBM-420	LER3-0420	409	431	420	30.8	134.4	0.78	WBM-640	LER3-0640	629	651	640	38.1	204.8	1.23
WBM-430	LER3-0430	419	441	430	31.1	137.6	0.80	WBM-650	LER3-0650	639	661	650	38.4	208	1.25
WBM-440	LER3-0440	429	451	440	31.5	140.8	0.82	WBM-660	LER3-0660	649	671	660	38.7	211.2	1.27
WBM-450	LER3-0450	439	461	450	31.8	144	0.84	WBM-670	LER3-0670	659	681	670	38.9	214.4	1.29
WBM-460	LER3-0460	449	471	460	32.2	147.2	0.86	WBM-680	LER3-0680	669	691	680	39.2	217.6	1.32
WBM-470	LER3-0470	459	481	470	32.5	150.4	0.87	WBM-690	LER3-0690	679	701	690	39.5	220.8	1.35
WBM-480	LER3-0480	469	491	480	32.9	153.6	0.89	WBM-700	LER3-0700	689	711	700	39.8	224	1.38
WBM-490	LER3-0490	479	501	490	33.2	156.8	0.91	WBM-710	LER3-0710	699	721	710	40.1	227.2	1.41
WBM-500	LER3-0500	489	511	500	33.5	160	0.93	WBM-720	LER3-0720	709	731	720	40.3	230.4	1.43
WBM-510	LER3-0510	499	521	510	33.9	163.2	0.95	WBM-730	LER3-0730	719	741	730	40.6	233.6	1.47
WBM-520	LER3-0520	509	531	520	34.2	166.4	0.97	WBM-740	LER3-0740	729	751	740	40.9	236.8	1.50
WBM-530	LER3-0530	519	541	530	34.5	169.6	0.99	WBM-750	LER3-0750	739	761	750	41.2	240	1.53
WBM-540	LER3-0540	529	551	540	34.9	172.8	1.02	WBM-760	LER3-0760	749	771	760	41.5	243.2	1.56
WBM-550	LER3-0550	539	561	550	35.2	176	1.05	WBM-770	LER3-0770	759	781	770	41.8	246.4	1.60



Wire Race Bearing

WBM series

尺寸范围 (mm) Size Range	钢球尺寸 (mm) Ball Diameter		钢球尺寸 (mm) Wire Race Dia		轴承尺寸 (mm) Bearing Dimensions				保持器尺寸 (mm) Cage Dimensions	
	DL	mm Inch	b	B	d	D	H	B1	Ha	Hb
WBM 100 - 1500	9, 525	3/8	3.0	4.0	DL-B1	DL+B1	13	11	12.6	2.5



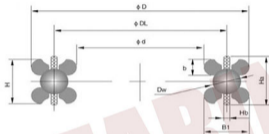
型号		轴承外形尺寸			额定负荷		重量	型号		轴承外形尺寸			额定负荷		重量
CLI Part No.	Other Part No.	Boundary Dimension (mm)			Cr	Cor	lg	CLI Part No.	Other Part No.	Boundary Dimension (mm)			Cr	Cor	lg
		d	D	DL						d	D	DL			
WBM-780	LER3-0780	789	791	790	42.3	249.6	1.63	WBM-1100	LER3-1100	1089	1111	1100	47.2	320	2.42
WBM-790	LER3-0790	779	801	790	42.6	252.8	1.66	WBM-1120	LER3-1120	1109	1131	1120	47.5	323.2	2.46
WBM-800	LER3-0800	789	811	800	42.9	256	1.69	WBM-1140	LER3-1140	1129	1151	1140	47.7	326.4	2.50
WBM-810	LER3-0810	799	821	810	43.1	259.2	1.72	WBM-1160	LER3-1160	1149	1171	1160	47.9	329.6	2.53
WBM-820	LER3-0820	809	831	820	43.5	262.4	1.75	WBM-1180	LER3-1180	1169	1191	1180	48.2	332.8	2.56
WBM-830	LER3-0830	819	841	830	43.8	265.6	1.78	WBM-1200	LER3-1200	1189	1211	1200	48.5	336	2.60
WBM-840	LER3-0840	829	851	840	44.1	268.8	1.80	WBM-1220	LER3-1220	1209	1231	1220	48.7	339.2	2.63
WBM-850	LER3-0850	839	861	850	44.3	272	1.83	WBM-1240	LER3-1240	1229	1251	1240	48.9	342.4	2.66
WBM-860	LER3-0860	849	871	860	44.5	275.2	1.85	WBM-1260	LER3-1260	1249	1271	1260	49.1	345.6	2.69
WBM-870	LER3-0870	859	881	870	44.7	278.4	1.88	WBM-1280	LER3-1280	1269	1291	1280	49.3	348.8	2.72
WBM-880	LER3-0880	869	891	880	44.9	281.6	1.91	WBM-1300	LER3-1300	1289	1311	1300	49.5	352	2.75
WBM-890	LER3-0890	879	901	890	45.1	284.8	1.94	WBM-1320	LER3-1320	1309	1331	1320	49.7	355.2	2.80
WBM-900	LER3-0900	889	911	900	45.3	288	1.97	WBM-1340	LER3-1340	1329	1351	1340	49.9	358.4	2.84
WBM-920	LER3-0920	909	931	920	45.5	291.2	2.00	WBM-1360	LER3-1360	1349	1371	1360	50.1	361.6	2.88
WBM-940	LER3-0940	929	951	940	45.7	294.4	2.05	WBM-1380	LER3-1380	1369	1391	1380	50.3	364.8	2.93
WBM-960	LER3-0960	949	971	960	45.9	297.6	2.10	WBM-1400	LER3-1400	1389	1411	1400	50.5	368	2.97
WBM-980	LER3-0980	969	991	980	46.1	300.8	2.15	WBM-1420	LER3-1420	1409	1431	1420	50.8	371.2	3.02
WBM-1000	LER3-1000	989	1011	1000	46.3	304	2.20	WBM-1440	LER3-1440	1429	1451	1440	51.1	374.4	3.07
WBM-1020	LER3-1020	1009	1031	1020	46.5	307.2	2.25	WBM-1460	LER3-1460	1449	1471	1460	51.4	377.6	3.12
WBM-1040	LER3-1040	1029	1051	1040	46.7	310.4	2.30	WBM-1480	LER3-1480	1469	1491	1480	51.7	380.8	3.17
WBM-1060	LER3-1060	1049	1071	1060	46.9	313.6	2.34	WBM-1500	LER3-1500	1489	1511	1500	52.1	384	3.20
WBM-1080	LER3-1080	1069	1091	1080	47.1	316.8	2.38								



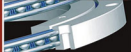
Wire Race Bearing

WBH series

尺寸范围 (mm) Size Range	钢球尺寸 (mm) Ball Diameter		钢球尺寸 (mm) Wire Race Dia	轴承尺寸 (mm) Bearing Dimensions				保持器尺寸 (mm) Cage Dimensions	
	mm	inch	b	d	D	H	B1	Hs	Hb
WBH 100 - 1500	9.525	3/8	4.0	DL-B1	DL-HB1	12.86	12.86	12.8	2.5



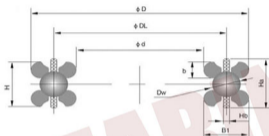
型号		轴承外形尺寸			额定负荷		重量	型号		轴承外形尺寸			额定负荷		重量
CLI Part No.	Other Part No.	Boundary Dimension (mm)			Rated Loading (KN)		Weight (kg)	Other Part No.	Other Part No.	Boundary Dimension (mm)			Rated Loading (KN)		Weight (kg)
		d	D	DL	Cr	Cor				d	D	DL	Cr	Cor	kg
WBH-100	LED4-0100	87.14	112.86	100	17	25	0.26	WSH-215	LED4-0215	202.14	227.86	215	23	57	0.42
WBH-105	LED4-0105	92.14	117.86	105	17	26	0.27	WSH-220	LED4-0220	207.14	232.86	220	24	58	0.43
WBH-110	LED4-0110	97.14	122.86	110	18	28	0.27	WSH-225	LED4-0225	212.14	237.86	225	24	59	0.44
WBH-115	LED4-0115	102.14	127.86	115	18	29	0.28	WSH-230	LED4-0230	217.14	242.86	230	24	60	0.45
WBH-120	LED4-0120	107.14	132.86	120	18	30	0.28	WSH-235	LED4-0235	222.14	247.86	235	24	61	0.46
WBH-125	LED4-0125	112.14	137.86	125	19	33	0.29	WSH-240	LED4-0240	227.14	252.86	240	24	63	0.47
WBH-130	LED4-0130	117.14	142.86	130	19	34	0.3	WSH-245	LED4-0245	232.14	257.86	245	24	64	0.48
WBH-135	LED4-0135	122.14	147.86	135	20	36	0.3	WSH-250	LED4-0250	237.14	262.86	250	25	66	0.49
WBH-140	LED4-0140	127.14	152.86	140	20	36	0.31	WSH-255	LED4-0255	242.14	267.86	255	25	67	0.5
WBH-145	LED4-0145	132.14	157.86	145	20	37	0.31	WSH-260	LED4-0260	247.14	272.86	260	25	69	0.51
WBH-150	LED4-0150	137.14	162.86	150	20	39	0.32	WSH-265	LED4-0265	252.14	277.86	265	25	70	0.52
WBH-155	LED4-0155	142.14	167.86	155	20	40	0.33	WSH-270	LED4-0270	257.14	282.86	270	25	71	0.54
WBH-160	LED4-0160	147.14	172.86	160	20	41	0.34	WSH-275	LED4-0275	262.14	287.86	275	26	72	0.55
WBH-165	LED4-0165	152.14	177.86	165	21	43	0.34	WSH-280	LED4-0280	267.14	292.86	280	26	73	0.56
WBH-170	LED4-0170	157.14	182.86	170	21	45	0.36	WSH-285	LED4-0285	272.14	297.86	285	26	75	0.57
WBH-175	LED4-0175	162.14	187.86	175	21	46	0.36	WSH-290	LED4-0290	277.14	302.86	290	26	77	0.58
WBH-180	LED4-0180	167.14	192.86	180	22	47	0.37	WSH-295	LED4-0295	282.14	307.86	295	26	78	0.6
WBH-185	LED4-0185	172.14	197.86	185	22	48	0.37	WSH-300	LED4-0300	287.14	312.86	300	27	79	0.61
WBH-190	LED4-0190	177.14	202.86	190	22	49	0.38	WSH-310	LED4-0310	297.14	322.86	310	27	82	0.62
WBH-195	LED4-0195	182.14	207.86	195	22	51	0.39	WSH-320	LED4-0320	307.14	332.86	320	27	84	0.64
WBH-200	LED4-0200	187.14	212.86	200	23	52	0.4	WSH-330	LED4-0330	317.14	342.86	330	28	88	0.65
WBH-205	LED4-0205	192.14	217.86	205	23	54	0.41	WSH-340	LED4-0340	327.14	352.86	340	28	90	0.66
WBH-210	LED4-0210	197.14	222.86	210	23	55	0.42	WSH-350	LED4-0350	337.14	362.86	350	28	92	0.68



Wire Race Bearing

WBH series

尺寸范围 (mm) Size Range	钢球尺寸 (mm) Ball Diameter		钢球尺寸 (mm) Wire Race Dia		轴承尺寸 (mm) Bearing Dimensions				保持器尺寸 (mm) Cage Dimensions	
	DL	d	b	D	d	D	H	B1	Hs	Hb
WBH 100 - 1500	9.525	3/8	4.0	DL-B1	DL+0.01	12.86	12.86	12.6	2.5	



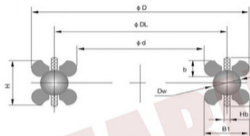
型号		轴承外形尺寸			额定负荷		重量	型号		轴承外形尺寸			额定负荷		重量
CLI Part No.	Other Part No.	Boundary Dimension (mm)			Rated Loading (KN)		Weight (kg)	Other Part No.	Other Part No.	Boundary Dimension (mm)			Rated Loading (KN)		Weight (kg)
		d	D	DL	Cr	Cor				d	D	DL	Cr	Cor	
WBH-360	LED4-0360	347.14	372.86	360	28	95	0.09	WBH-590	LED4-0590	577.14	602.86	590	34	157	1.13
WBH-370	LED4-0370	357.14	382.86	370	29	98	0.71	WBH-600	LED4-0600	587.14	612.86	600	34	159	1.15
WBH-380	LED4-0380	367.14	392.86	380	29	100	0.72	WBH-610	LED4-0610	597.14	622.86	610	34	162	1.18
WBH-390	LED4-0390	377.14	402.86	390	29	103	0.74	WBH-620	LED4-0620	607.14	632.86	620	35	165	1.2
WBH-400	LED4-0400	387.14	412.86	400	29	106	0.75	WBH-630	LED4-0630	617.14	642.86	630	35	168	1.23
WBH-410	LED4-0410	397.14	422.86	410	30	109	0.77	WBH-640	LED4-0640	627.14	652.86	640	35	170	1.25
WBH-420	LED4-0420	407.14	432.86	420	30	112	0.78	WBH-650	LED4-0650	637.14	662.86	650	35	173	1.28
WBH-430	LED4-0430	417.14	442.86	430	30	114	0.79	WBH-660	LED4-0660	647.14	672.86	660	35	176	1.31
WBH-440	LED4-0440	427.14	452.86	440	31	116	0.82	WBH-670	LED4-0670	657.14	682.86	670	35	179	1.34
WBH-450	LED4-0450	437.14	462.86	450	31	119	0.84	WBH-680	LED4-0680	667.14	692.86	680	35	181	1.37
WBH-460	LED4-0460	447.14	472.86	460	31	122	0.86	WBH-690	LED4-0690	677.14	702.86	690	35	183	1.4
WBH-470	LED4-0470	457.14	482.86	470	31	125	0.87	WBH-700	LED4-0700	687.14	712.86	700	36	187	1.43
WBH-480	LED4-0480	467.14	492.86	480	32	127	0.89	WBH-710	LED4-0710	697.14	722.86	710	36	189	1.46
WBH-490	LED4-0490	477.14	502.86	490	32	130	0.91	WBH-720	LED4-0720	707.14	732.86	720	37	192	1.49
WBH-500	LED4-0500	487.14	512.86	500	32	133	0.93	WBH-730	LED4-0730	717.14	742.86	730	37	194	1.52
WBH-510	LED4-0510	497.14	522.86	510	32	136	0.95	WBH-740	LED4-0740	727.14	752.86	740	37	196	1.55
WBH-520	LED4-0520	507.14	532.86	520	33	138	0.97	WBH-750	LED4-0750	737.14	762.86	750	37	200	1.59
WBH-530	LED4-0530	517.14	542.86	530	33	140	0.99	WBH-760	LED4-0760	747.14	772.86	760	37	203	1.62
WBH-540	LED4-0540	527.14	552.86	540	33	144	1.01	WBH-770	LED4-0770	757.14	782.86	770	38	205	1.65
WBH-550	LED4-0550	537.14	562.86	550	33	146	1.04	WBH-780	LED4-0780	767.14	792.86	780	38	209	1.69
WBH-560	LED4-0560	547.14	572.86	560	33	149	1.06	WBH-790	LED4-0790	777.14	802.86	790	38	211	1.72
WBH-570	LED4-0570	557.14	582.86	570	34	151	1.08	WBH-800	LED4-0800	787.14	812.86	800	38	213	1.75
WBH-580	LED4-0580	567.14	592.86	580	34	155	1.1	WBH-810	LED4-0810	797.14	822.86	810	38	216	1.78



Wire Race Bearing

WBH series

尺寸范围 (mm) Size Range	钢球尺寸 (mm) Ball Diameter		钢球尺寸 (mm) Wire Race Dia		轴承尺寸 (mm) Bearing Dimensions				保持器尺寸 (mm) Cage Dimensions	
	DL	mm	inch	b	d	D	H	Bl	Ha	Hb
WBH 100 - 1500		9.525	3/8	4.0	DL-B1	DL+0B1	12.86	12.86	12.6	2.5



型号		轴承外形尺寸			额定负荷		重量	型号		轴承外形尺寸			额定负荷		重量
CLI Part No.	Other Part No.	Boundary Dimension (mm)			Rated Loading (KN)		Weight	Other Part No.	Other Part No.	Boundary Dimension (mm)			Rated Loading (KN)		Weight
		d	D	DL	Cr	Cor	kg			d	D	DL	Cr	Cor	kg
WBH-830	LED4-0830	807.14	832.86	820	39	219	1.81	WBH-1200	LED4-1200	1187.14	1212.86	1200	44	321	3.1
WBH-830	LED4-0830	817.14	842.86	830	39	222	1.85	WBH-1220	LED4-1220	1207.14	1232.86	1220	45	326	3.16
WBH-840	LED4-0840	827.14	852.86	840	39	224	1.9	WBH-1240	LED4-1240	1227.14	1252.86	1240	45	332	3.22
WBH-850	LED4-0850	837.14	862.86	850	39	226	1.94	WBH-1260	LED4-1260	1247.14	1272.86	1260	45	337	3.28
WBH-860	LED4-0860	847.14	872.86	860	39	229	1.98	WBH-1280	LED4-1280	1267.14	1292.86	1280	45	343	3.35
WBH-870	LED4-0870	857.14	882.86	870	39	232	2.06	WBH-1300	LED4-1300	1287.14	1312.86	1300	46	347	3.42
WBH-880	LED4-0880	867.14	892.86	880	40	235	2.1	WBH-1320	LED4-1320	1307.14	1332.86	1320	46	353	3.49
WBH-890	LED4-0890	877.14	902.86	890	40	237	2.17	WBH-1340	LED4-1340	1327.14	1352.86	1340	46	358	3.56
WBH-900	LED4-0900	887.14	912.86	900	40	240	2.21	WBH-1360	LED4-1360	1347.14	1372.86	1360	46	364	3.61
WBH-920	LED4-0920	907.14	932.86	920	40	246	2.28	WBH-1380	LED4-1380	1367.14	1392.86	1380	47	369	3.69
WBH-940	LED4-0940	927.14	952.86	940	40	250	2.33	WBH-1400	LED4-1400	1387.14	1412.86	1400	47	375	3.75
WBH-960	LED4-0960	947.14	972.86	960	41	256	2.39	WBH-1420	LED4-1420	1407.14	1432.86	1420	47	380	3.81
WBH-980	LED4-0980	967.14	992.86	980	41	261	2.44	WBH-1440	LED4-1440	1427.14	1452.86	1440	47	386	3.87
WBH-1000	LED4-1000	987.14	1012.86	1000	41	267	2.49	WBH-1460	LED4-1460	1447.14	1472.86	1460	48	393	3.94
WBH-1020	LED4-1020	1007.14	1032.86	1020	42	272	2.54	WBH-1480	LED4-1480	1467.14	1492.86	1480	48	400	4.00
WBH-1040	LED4-1040	1027.14	1052.86	1040	42	278	2.59	WBH-1500	LED4-1500	1487.14	1512.86	1500	48	407	4.07
WBH-1060	LED4-1060	1047.14	1072.86	1060	42	283	2.65								
WBH-1080	LED4-1080	1067.14	1092.86	1080	43	289	2.71								
WBH-1100	LED4-1100	1087.14	1112.86	1100	43	293	2.76								
WBH-1120	LED4-1120	1107.14	1132.86	1120	43	299	2.82								
WBH-1140	LED4-1140	1127.14	1152.86	1140	43	304	2.87								
WBH-1160	LED4-1160	1147.14	1172.86	1160	44	310	2.93								
WBH-1180	LED4-1180	1167.14	1192.86	1180	44	315	3.00								



0086 28 8669 3910

www.clibearings.com

sales@clibearings.com

CLI BEARINGS CO., LTD