



[www.cli-industrial.com](http://www.cli-industrial.com)

**WE  
FOCUS ON...**

## Powder Metallurgy Technology

- ◉ Sintered Bronze Bearings *Oil Impregnated*
- ◉ Sintered Iron Bearings *Oil Impregnated*
- ◉ Sintered Auto Parts *Oil Impregnated*
- ◉ Sintered Machine Tools *Oil Impregnated*



**CLI Industrial Co., Ltd.**

- Company Add: Rom 405, No. 49 Huaishu Street, Chengdu, 610031, China
- Plant Add: Dayun Industrial Zone, Jiashan City, Zhejiang Province, China.
- Tel: 0086-28-86693910
- Fax: 0086-28-86250130
- Web: [www.cli-industrial.com](http://www.cli-industrial.com)
- Email: [sales@cli-industrial.com](mailto:sales@cli-industrial.com)

ISO9001:2000  
STANDARDIZED  
SLIDING BEARING FACTORY



## ■ Introduction of Powder Metallurgy (PM)

Powder metallurgy (PM) is a forming and fabrication technique consisting of three major processing stages.

First, the primary material is physically powdered, divided into many small individual particles.

Next, the powder is injected into a mold or passed through a die to produce a weakly cohesive structure (via cold welding) very near the dimensions of the object ultimately to be manufactured. Pressures of 10-50 tons per square inch are commonly used. Also, to attain the same compression ratio across more complex pieces, it is often necessary to use lower punches as well as an upper punch.

Finally, the end part is formed by applying pressure, high temperature, long setting times (during which self-welding occurs), or any combination thereof.

## ■ Why PM?

The PM process provides a host of advantages over competing metalworking technologies. These all add up to cost effectiveness, shape and material flexibility, application versatility, and part-to-part uniformity for improved product quality.

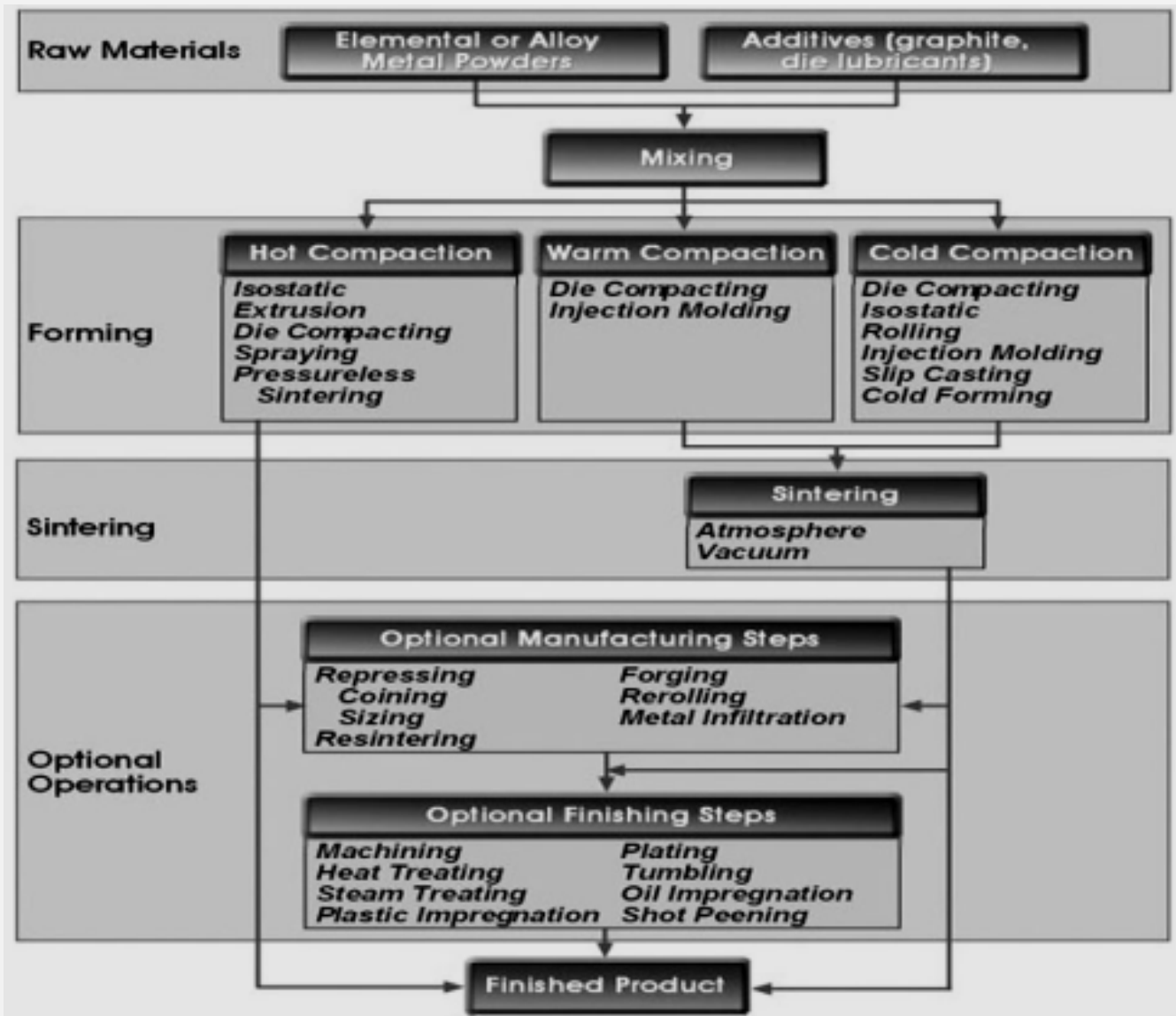
## ■ Advantages of PM Products

1. Eliminates or minimizes machining by producing parts at, or close to, final dimensions
2. Eliminates or minimizes scrap losses by typically using more than 97% of the starting raw material in the finished part
3. Permits a wide variety of alloy systems
4. Produces good surface finishes
5. Provides materials which may be heat treated for increased strength or increased wear resistance
6. Provides controlled porosity for self lubrication or filtration
7. Facilitates manufacture of complex or unique shapes which would be impractical or impossible with other metalworking processes
8. Impossible with other metalworking processes
9. Is suited to moderate- to high-volume component production requirements
10. Offers long-term performance reliability in critical applications
11. Is cost effective

## ■ PM Process

The PM process, depicted in the diagram below, consists of mixing elemental or alloy powders, compacting the mixture in a die, and then sintering, or heating, the resultant shapes in a controlled-atmosphere furnace to bond the particles metallurgically.

Most PM parts weigh less than 5 pounds (2.27 kg), although parts weighing as much as 35 pounds (15.89 kg) can be fabricated in conventional PM equipment. While many of the early PM parts, such as bushings and bearings, were very simple shapes, today's sophisticated PM process produces components with complex contours and multiple levels and does so quite economically



■ PM Product List



**FU-B**

**FU-B Sintered Bronze Bearings with Oil Impregnation**

Material: **Bronze**

Abrasion Resistance

Self-lubricating

Maintenance-free

**4/21**



**FU-I**

**FU-I Sintered Iron Bearings with Oil Impregnation**

Material: **Iron**

Abrasion Resistance

Self-lubricating

Maintenance-free

**5/21**



### ● Product Code: FU-B Sintered Bronze Bearings



#### ● Descriptions

Material: **sintered bronze powder with oil impregnated**

Abrasion Resistance

Self-lubricating

Maintenance-free

#### ● Features

High load capacity, very good wear and abrasion resistance, moderate corrosion resistance, hardened mating material favorable. Special suitable for toggle mechanism bushing in injection molding machines.

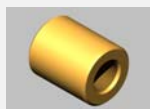
#### ● Possible Applications

The product is widely used in micro motor, computer, office equipment, industrial machinery like motor, auto & motorcycle etc.

### ● Material Code, Physical & Mechanical Properties

Material Code	Chemical Composition						130 psi	Mpa	Oil Content %	Density g/cm3
	Cu	Sn	Zn	Pb	C	other				
MPIF Standard:CT-1000-K19 ASTM:B 438-83a Class A, Type 1	87.2-90.5	9.5-10.5	/	/	0-0.3	0-2.0	19	130	24	6.0-6.4
MPIF Standard:CT-1000-K26 ASTM:B 438-83a Class A, Type II DIN:SINT-A50	87.2-90.5	9.5-10.5	/	/	0-0.3	0-2.0	26	180	19	6.4-6.8
MPIF Standard:CT-1000-K37 ASTM:B 438-83a Class A, Type III DIN:SINT-B50	87.2-90.5	9.5-10.5	/	/	0-0.3	0-2.0	37	260	12	6.8-7.2
MPIF Standard:CT-1000-K40	87.2-90.5	9.5-10.5	/	/	0-0.3	0-2.0	40	280	9	7.2-7.6
MPIF Standard:CT-1000-K17	85.7-90.0	9.5-10.5	/	/	0.5-1.8	0-2.0	17	120	22	6.0-6.4
MPIF Standard:CT-1000-K23 ASTM:B 438-83a Class B, Type II DIN:SINT-B51	85.7-90.0	9.5-10.5	/	/	0.5-1.8	0-2.0	23	160	17	6.4-6.8
MPIF Standard:CTG-1001-K30	85.7-90.0	9.5-10.5	/	/	0.5-1.8	0-2.0	30	210	9	6.8-7.2
MPIF Standard:CTG-1001-K34	85.7-90.0	9.5-10.5	/	/	0.5-1.8	0-2.0	34	230	7	7.2-7.6
MPIF Standard:CTG-1004-K10	82.8-88.3		/	/	2.5-5.0	0-2.0	10	70	11	5.8-6.2
MPIF Standard:CTG-1004-K15	82.8-88.3		/	/	2.5-5.0	0-2.0	15	100	4	6.2-6.6
MPIF Standard:FZ-2170	80.0-82.0	5.0-7.0	5.0-7.0	2.0-4.0	0.5-2.0	0-1.5	/	/	18	6.6-7.2
MPIF Standard:FZ-2175	80.0-82.0	5.0-7.0	5.0-7.0	2.0-4.0	0.5-2.0	0-1.5	/	/	12	7.2-7.8

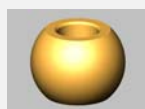
### ● Available Forms



Cylindrical Bush



Flanged Bush



Spherical Bush



Bush with Collar

Plant Add: Dayun Industrial Zone, Jia Shan City,  
Zhejiang Province, P.R. China.

Office Add: Room 405, No. 49 Huaishu Street,  
Chengdu, 610031 P.R. China.

## Contact Us

www.cli-industrial.com  
www.clibearings.com  
sales@cli-industrial.com  
sales@clibearings.com





**CLI INDUSTRIAL CO., LTD.**

ISO 9001:2000 Standardized  
Sliding Bearing Factory

# Sintered Oil-impregnated Bearings

- Sintered Bronze Bearings    ■ Sintered Iron Bearings
- Sintered Auto Parts        ■ Sintered Machine Tools

● **Product Code: FU-I Sintered Iron Bearings**



● **Descriptions**

Material: **sintered iron powder with oil impregnated**

Abrasion Resistance

Self-lubricating

Maintenance-free

● **Features**

High load capacity, very good wear and abrasion resistance, moderate corrosion resistance, hardened mating material favorable. Special suitable for toggle mechanism bushing in injection molding machines.

● **Possible Applications**

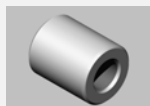
The product is widely used in micro motor, computer, office equipment, industrial machinery like motor, auto & motorcycle etc.

● **Material Code, Physical & Mechanical Properties**

MPIF Standards	Chemical Composition (%)			Minimum Value			Density	
				Constant		Oil content Capacity	g/cm <sup>3</sup>	
	Element	Min	Max	10 <sup>3</sup> psi	Mpa	%	Min	Max
F-0000-K15	Fe:	96,20	- 100,00	15	100	21	5,60	6,00
	C:	0,00	- 0,30					
F-0000-K23	Cu:	0,00	- 1,50	23	160	17	6,00	6,40
	Other:	0,00	- 2,00					
F-0005-K20	Fe:	95,90	- 99,70	20	140	21	5,60	6,00
	C:	0,30	- 0,60					
F-0005-K28	Cu:	0,00	- 1,50	28	190	17	6,00	6,40
	Other:	0,00	- 2,00					
F-0008-K20	Fe:	95,60	- 99,40	20	140	21	5,60	6,00
	C:	0,60	- 0,90					
F-0008-K32	Cu:	0,00	- 1,50	32	220	17	6,00	6,40
	Other:	0,00	- 2,00					
FC-0200-K20	Fe:	93,80	- 98,50	20	140	22	5,60	6,00
	Cu:	1,50	- 3,90					
FC-0200-K34	C:	0,00	- 0,30	34	230	17	6,00	6,40
	Other:	0,00	- 2,00					
FC-1000-K20	Fe:	86,70	- 91,00	20	140	22	5,60	6,00
	Cu:	9,00	- 11,00					
FC-1000-K30	C:	0,00	- 0,30	30	210	19	5,80	6,20
FC-1000-K40	Other:	0,00	- 2,00	40	280	17	6,00	6,40
FC-2000-K25	Fe:	75,70	- 82,00	25	170	22	5,60	6,00
	Cu:	18,00	- 22,00					
FC-2000-K30	C:	0,00	- 0,30	30	210	19	5,80	6,20
FC-2000-K40	Other:	0,00	- 2,00	40	280	17	6,00	6,40
FC-0205-K20	Fe:	93,50	- 98,20	20	140	22	5,60	6,00
	Cu:	1,50	- 3,90					

FC-0205-K35	C: 0,30 - 0,60 Other: 0,00 - 2,00	35	240	17	6,00	6,40
FC-0208-K25	Fe: 93,20 - 97,90 Cu: 1,50 - 3,90	25	170	22	5,60	6,00
FC-0208-K40	C: 0,60 - 0,90 Other: 0,00 - 2,00	40	280	17	6,00	6,40
FC-0508-K35	Fe: 91,10 - 95,40 Cu: 4,00 - 6,00	35	240	22	5,60	6,00
FC-0508-K40	C: 0,60 - 0,90 Other: 0,00 - 2,00	46	320	17	6,00	6,40
FC-2008-K44	Fe: 75,10 - 81,40 Cu: 18,00 - 22,00	44	300	22	5,60	6,00
FC-2008-K46	C: 0,60 - 0,90 Other: 0,00 - 2,00	46	320	17	6,00	6,40
FCTG-3604-K16	Fe: 54,20 - 62,00 Cu: 34,00 - 38,00 Sn: 3,50 - 4,50	16	110	22	5,60	6,00
FCTG-3604-K22	C: 0,50 - 1,30 Other: 0,00 - 2,00	22	150	17	6,00	6,40
CFTG-3806-K14	Fe: 50,20 - 58,00 Cu: 36,00 - 40,00 Sn: 5,50 - 6,50	14	100	22	5,60	6,00
CFTG-3806-K22	C: 0,50 - 1,30 Other: 0,00 - 2,00	22	150	17	6,00	6,40

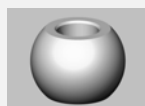
#### ● Available Forms



Cylindrical Bush



Flanged Bush



Spherical Bush



Bush with Collar

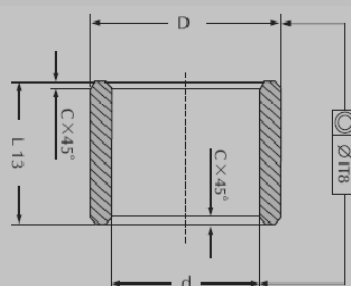
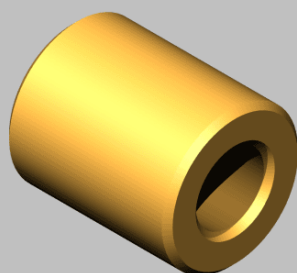
Plant Add: Dayun Industrial Zone, Jia Shan City,  
Zhejiang Province, P.R. China.  
Office Add: Room 405, No. 49 Huaishu Street,  
Chengdu, 610031 P.R. China.

**Contat Us**

www.cll-industrial.com  
www.cllbearings.com  
sales@ccl-industrial.com  
sales@cclbearings.com



**FU-BA Cylindrical Bush**



Product No.	d	D	L
	G7	s7	js13
FU-BA0306	3	6	4/5/6
FU-BA0407	4	7	4/6/8
FU-BA0408	4	8	6/8/10
FU-BA0508	5	8	5/8/10
FU-BA0509	5	9	5/8/10
FU-BA0510	5	10	5/10/12
FU-BA0609	6	9	6/10/12
FU-BA0612	6	12	6/10/12/15
FU-BA0710	7	10	5/8/10
FU-BA0711	7	11	8/10
FU-BA0810	8	10	6/10/15
FU-BA0811	8	11	8/12/16
FU-BA0812	8	12	8/10/12/15/16
FU-BA0814	8	14	8/10/12/15/16
FU-BA0912	9	12	6/10/14
FU-BA0914	9	14	10/12/15
FU-BA1013	10	13	10/12/15/16
FU-BA1014	10	14	8/10/16/20
FU-BA1015	10	15	10/12/15/16/20
FU-BA1016	10	16	10/12/15/16/20
FU-BA1018	10	18	10/12/15/20/25
FU-BA1214	12	14	10/12/15
FU-BA1215	12	15	10/12/15/16/20

<b>Product No.</b>	<b>d G7</b>	<b>D s7</b>	<b>L js13</b>
FU-BA1216	12	16	8/10/12/15/16/20
FU-BA1217	12	17	12/15/16/25
FU-BA1218	12	18	10/12/15/16/20/25
FU-BA1220	12	20	12/15/20/25
FU-BA1418	14	18	10/14/15/18/20/22/25
FU-BA1420	14	20	10/14/15/18/20/22/25/28
FU-BA1422	14	22	15/20/25/30
FU-BA1518	15	18	15/20/25
FU-BA1519	15	19	10/15/16/20/25/30
FU-BA1520	15	20	15/20/25/30
FU-BA1521	15	21	10/15/16/20/25
FU-BA1522	15	22	15/20/25/30
FU-BA1620	16	20	12/15/16/20/25/30
FU-BA1622	16	22	12/15/16/20/25/30/32
FU-BA1722	17	22	15/20/25/30
FU-BA1822	18	22	12/15/18/20/22/25/28/30
FU-BA1824	18	24	12/18/20/22/25/28/30/35
FU-BA1825	18	25	18/22/25/28/30/36
FU-BA2024	20	24	16/20/25/32
FU-BA2025	20	25	15/16/20/25/30/32/35
FU-BA2026	20	26	15/16/20/25/30/32/35
FU-BA2027	20	27	16/20/25/32
FU-BA2028	20	28	16/20/25/30/32/35
FU-BA2030	20	30	20/25/30/35/40
FU-BA2227	22	27	15/18/20/22/25/28/30/35/36
FU-BA2228	22	28	15/18/20/22/25/28/30/35/36
FU-BA2229	22	29	18/22/28/36
FU-BA2530	25	30	20/25/30/32/35/40
FU-BA2532	25	32	20/25/30/32/35/40
FU-BA2535	25	35	25/30/35/40/45
FU-BA2832	28	32	22/28/36
FU-BA2833	28	33	20/22/28/30/36/40/45
FU-BA2835	28	35	25/30/35/40/45
FU-BA2836	28	36	22/28/36/45



Product No.	d G7	D s7	L js13
FU-BA3035	30	35	20/25/30/35/40/45
FU-BA3038	30	38	20/25/30/35/38/40/45
FU-BA3040	30	40	20/25/30/35/40/45/50
FU-BA3238	32	38	20/25/30/32/40/45/50
FU-BA3240	32	40	20/25/30/32/35/40/45/50
FU-BA3540	35	40	20/25/30/35/40/45
FU-BA3541	35	41	25/35/40
FU-BA3544	35	44	22/28/35
FU-BA3545	35	45	25/30/35/40/45/50/60
FU-BA3642	36	42	22/28/36/45
FU-BA3645	36	45	22/28/36/45
FU-BA3844	38	44	25/35/45
FU-BA3848	38	48	35/45/55
FU-BA4045	40	45	35/40/45/50
FU-BA4046	40	46	25/30/32/40
FU-BA4050	40	50	25/30/32/35/40/45/50/60
FU-BA4248	42	48	30/40/50
FU-BA4252	42	52	40/50/60
FU-BA4551	45	51	28/36/45/56
FU-BA4555	45	55	30/35/40/45/50/55/60
FU-BA4556	45	56	28/36/45/56
FU-BA4560	45	60	40/45/50/60
FU-BA4855	48	55	35/40/50
FU-BA4858	48	58	45/50/60
FU-BA5056	50	56	32/40/50/63
FU-BA5060	50	60	32/35/40/45/50/60/63/70
FU-BA5563	55	63	40/55/70
FU-BA5565	55	65	40/55/70
FU-BA6068	60	68	50/60/70
FU-BA6070	60	70	50/60/70
FU-BA6072	60	72	50/60/70

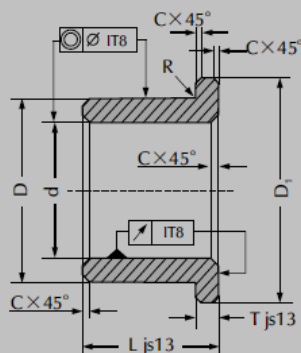
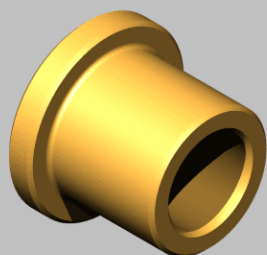
Plant Add: Dayun Industrial Zone, Jia Shan City,  
Zhejiang Province, P.R. China.  
Office Add: Room 405, No. 49 Hualshu Street,  
Chengdu, 610031 P.R. China.

**Contat Us**

www.cll-industrial.com  
www.cllbearings.com  
sales@clic-industrial.com  
sales@clicbearings.com



**FU-BB Flanged Bush**



Product No.	d G7	D s7	D1 js13	T js13	L js13
FU-BB0306	3	6	9	1.5	4-5-6-10
FU-BB0408	4	8	12	2	4-5-6-8-10-12
FU-BB0509	5	9	13	2	4-5-8
FU-BB0610	6	10	14	2	5-6-10-12-15-16
FU-BB0711	7	11	15	2	5-8-10
FU-BB0812	8	12	16	2	8-10-12-15-16-20
FU-BB0914	9	14	19	2.5	6-10-14
FU-BB1013	10	13	17	2.5	10-16-20
FU-BB1014	10	14	18	2	10-15-20
FU-BB1015	10	15	21	3	8-10-15-16-20
FU-BB1016	10	16	22	3	8-10-16
FU-BB1215	12	15	21	3	12-16-20
FU-BB1216	12	16	18	2	12-16-20
FU-BB1217	12	17	23	3	12-16-20-25
FU-BB1218	12	18	24	3	8-12-20
FU-BB1418	14	18	22	2	14-18-22
FU-BB1420	14	20	26	3	10-14-15-18-20-22-28
FU-BB1519	15	19	25	3	16-20-25
FU-BB1520	15	20	25	3	15-20-25-30
FU-BB1521	15	21	27	3	10-15-16-20-25-32
FU-BB1620	16	20	27	3	16-20-25
FU-BB1622	16	22	28	3	12-15-16-20-25-30-32
FU-BB1822	18	22	26	2	18-22-28

Product No.	d G7	D s7	D1 js13	T js13	L js13
FU-BB1824	18	24	30	3	12-18-22-28-30
FU-BB1825	18	25	32	4	20-25-30-35
FU-BB2024	20	24	30	3	16-20-25
FU-BB2026	20	26	32	3	15-16-20-25-30-32
FU-BB2028	20	28	35	4	20-25-30-35
FU-BB2227	22	27	32	3	18-22-28
FU-BB2228	22	28	34	3	15-20-25-30
FU-BB2229	22	29	36	4	18-22-28-36
FU-BB2530	25	30	39	4	20-25-32
FU-BB2532	25	32	39	4	20-25-30-32
FU-BB2833	28	33	38	3	22-28-36
FU-BB2836	28	36	44	4	20-22-25-28-30-35-36-40
FU-BB3038	30	38	46	4	20-25-30
FU-BB3040	30	40	48	4	25-30-35-40
FU-BB3238	32	38	46	4	20-25-32
FU-BB3240	32	40	48	4	20-25-28-30-32-35-36-40
FU-BB3545	35	45	55	5	25-30-35-40
FU-BB3642	36	42	48	4.5	22-28-36
FU-BB3848	38	48	58	5	25-35
FU-BB4046	40	46	52	5	25-32-40
FU-BB4050	40	50	60	5	25-30-32-35-40-50
FU-BB4252	42	52	62	5	30-40-50
FU-BB4551	45	51	57	3	28-36-45
FU-BB4555	45	55	65	5	35-45-55
FU-BB4556	45	56	67	5.5	28-36-45
FU-BB5056	50	56	62	3	32-40-50
FU-BB5060	50	60	70	5	32-40-50
FU-BB6070	60	70	80	5	50-60

Plant Add: Dayun Industrial Zone, Jia Shan City,  
Zhejiang Province, P.R. China.  
Office Add: Room 405, No. 49 Huaishu Street,  
Chengdu, 610031 P.R. China.

**Contat Us**

www.cll-industrial.com  
www.cllbearings.com  
sales@ccll-industrial.com  
sales@ccllbearings.com



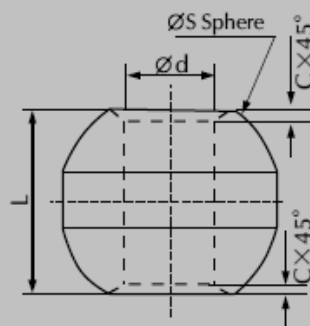
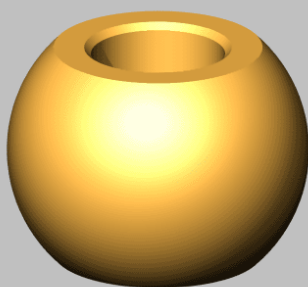
**CLI INDUSTRIAL CO., LTD.**

ISO 9001:2000 Standardized  
Sliding Bearing Factory

## Sintered Oil-impregnated Bearings

- Sintered Bronze Bearings
- Sintered Iron Bearings
- Sintered Auto Parts
- Sintered Machine Tools

### FU-BC Spherical Bush



Product No.	d H7	S Sphere	L js13
FU-BC0408	4	10	8
FU-BC0509	5	12	9
FU-BC0611	6	14	11
FU-BC0712	7	16	12
FU-BC0813	8	18	13
FU-BC0914.5	9	20	14.5
FU-BC1016	10	22	16
FU-BC1216	12	23	16

Plant Add: Dayun Industrial Zone, Jia Shan City,  
Zhejiang Province, P.R. China.

Office Add: Room 405, No. 49 Huaishu Street,  
Chengdu, 610031 P.R. China.

**Contat Us**

[www.cli-industrial.com](http://www.cli-industrial.com)  
[www.clibearings.com](http://www.clibearings.com)  
[sales@cli-industrial.com](mailto:sales@cli-industrial.com)  
[sales@clibearings.com](mailto:sales@clibearings.com)



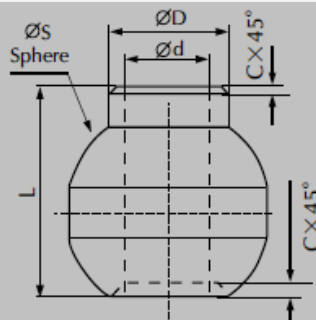
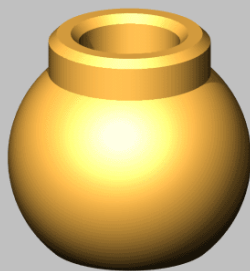
**CLI INDUSTRIAL CO., LTD.**

ISO 9001:2000 Standardized  
Sliding Bearing Factory

## Sintered Oil-impregnated Bearings

- Sintered Bronze Bearings    ■ Sintered Iron Bearings
- Sintered Auto Parts        ■ Sintered Machine Tools

### FU-BD Spherical Bush with Collar



Product No.	d G7	D	S Sphere	L js13
FU-BD0410	4	6	10	10
FU-BD0511	5	8	12	11
FU-BD0613	6	9	14	13
FU-BD0714	7	11	16	14
FU-BD0816	8	13	18	16
FU-BD0917	9	14	20	17
FU-BD1018	10	15	22	18
FU-BD1218	12	18	23	18

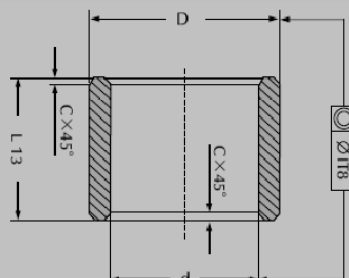
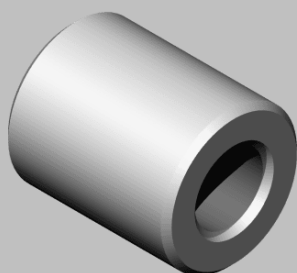
Plant Add: Dayun Industrial Zone, Jia Shan City,  
Zhejiang Province, P.R. China.  
Office Add: Room 405, No. 49 Huaishu Street,  
Chengdu, 610031 P.R. China.

## Contact Us

www.cli-industrial.com  
www.clibearings.com  
sales@cli-industrial.com  
sales@clibearings.com



**FU-IA Cylindrical Bush**



Product No.	d	D	L
	G7	s7	
FU-IA0306	3	6	4/5/6
FU-IA0407	4	7	4/6/8
FU-IA0408	4	8	6/8/10
FU-IA0508	5	8	5/8/10
FU-IA0509	5	9	5/8/10
FU-IA0510	5	10	5/10/12
FU-IA0609	6	9	6/10/12
FU-IA0612	6	12	6/10/12/15
FU-IA0710	7	10	5/8/10
FU-IA0711	7	11	8/10
FU-IA0810	8	10	6/10/15
FU-IA0811	8	11	8/12/16
FU-IA0812	8	12	8/10/12/15/16
FU-IA0814	8	14	8/10/12/15/16
FU-IA0912	9	12	6/10/14
FU-IA0914	9	14	10/12/15
FU-IA1013	10	13	10/12/15/16
FU-IA1014	10	14	8/10/16/20
FU-IA1015	10	15	10/12/15/16/20
FU-IA1016	10	16	10/12/15/16/20
FU-IA1018	10	18	10/12/15/20/25
FU-IA1214	12	14	10/12/15
FU-IA1215	12	15	10/12/15/16/20



Product No.	d G7	D s7	L js13
FU-IA1216	12	16	8/10/12/15/16/20
FU-IA1217	12	17	12/15/16/25
FU-IA1218	12	18	10/12/15/16/20/25
FU-IA1220	12	20	12/15/20/25
FU-IA1418	14	18	10/14/15/18/20/22/25
FU-IA1420	14	20	10/14/15/18/20/22/25/28
FU-IA1422	14	22	15/20/25/30
FU-IA1518	15	18	15/20/25
FU-IA1519	15	19	10/15/16/20/25/30
FU-IA1520	15	20	15/20/25/30
FU-IA1521	15	21	10/15/16/20/25
FU-IA1522	15	22	15/20/25/30
FU-IA1620	16	20	12/15/16/20/25/30
FU-IA1622	16	22	12/15/16/20/25/30/32
FU-IA1722	17	22	15/20/25/30
FU-IA1822	18	22	12/15/18/20/22/25/28/30
FU-IA1824	18	24	12/18/20/22/25/28/30/35
FU-IA1825	18	25	18/22/25/28/30/36
FU-IA2024	20	24	16/20/25/32
FU-IA2025	20	25	15/16/20/25/30/32/35
FU-IA2026	20	26	15/16/20/25/30/32/35
FU-IA2027	20	27	16/20/25/32
FU-IA2028	20	28	16/20/25/30/32/35
FU-IA2030	20	30	20/25/30/35/40
FU-IA2227	22	27	15/18/20/22/25/28/30/35/36
FU-IA2228	22	28	15/18/20/22/25/28/30/35/36
FU-IA2229	22	29	18/22/28/36
FU-IA2530	25	30	20/25/30/32/35/40
FU-IA2532	25	32	20/25/30/32/35/40
FU-IA2535	25	35	25/30/35/40/45
FU-IA2832	28	32	22/28/36
FU-IA2833	28	33	20/22/28/30/36/40/45
FU-IA2835	28	35	25/30/35/40/45
FU-IA2836	28	36	22/28/36/45

Product No.	d G7	D s7	L js13
FU-IA3035	30	35	20/25/30/35/40/45
FU-IA3038	30	38	20/25/30/35/38/40/45
FU-IA3040	30	40	20/25/30/35/40/45/50
FU-IA3238	32	38	20/25/30/32/40/45/50
FU-IA3240	32	40	20/25/30/32/35/40/45/50
FU-IA3540	35	40	20/25/30/35/40/45
FU-IA3541	35	41	25/35/40
FU-IA3544	35	44	22/28/35
FU-IA3545	35	45	25/30/35/40/45/50/60
FU-IA3642	36	42	22/28/36/45
FU-IA3645	36	45	22/28/36/45
FU-IA3844	38	44	25/35/45
FU-IA3848	38	48	35/45/55
FU-IA4045	40	45	35/40/45/50
FU-IA4046	40	46	25/30/32/40
FU-IA4050	40	50	25/30/32/35/40/45/50/60
FU-IA4248	42	48	30/40/50
FU-IA4252	42	52	40/50/60
FU-IA4551	45	51	28/36/45/56
FU-IA4555	45	55	30/35/40/45/50/55/60
FU-IA4556	45	56	28/36/45/56
FU-IA4560	45	60	40/45/50/60
FU-IA4855	48	55	35/40/50
FU-IA4858	48	58	45/50/60
FU-IA5056	50	56	32/40/50/63
FU-IA5060	50	60	32/35/40/45/50/60/63/70
FU-IA5563	55	63	40/55/70
FU-IA5565	55	65	40/55/70
FU-IA6068	60	68	50/60/70
FU-IA6070	60	70	50/60/70
FU-IA6072	60	72	50/60/70

Plant Add: Dayun Industrial Zone, Jia Shan City,  
Zhejiang Province, P.R. China.  
Office Add: Room 405, No. 49 Huaishu Street,  
Chengdu, 610031 P.R. China.

**Contat Us**

www.cll-industrial.com  
www.cllbearings.com  
sales@clic-industrial.com  
sales@clicbearings.com



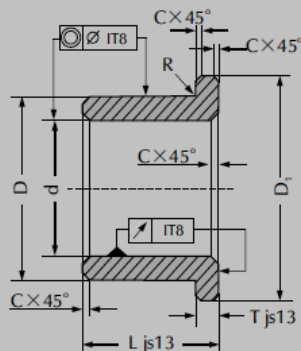
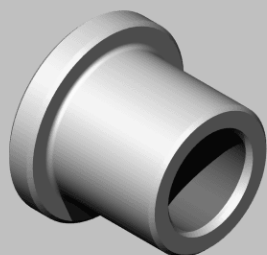
**CLI INDUSTRIAL CO., LTD.**

ISO 9001:2000 Standardized  
Sliding Bearing Factory

## Sintered Oil-impregnated Bearings

- Sintered Bronze Bearings    ■ Sintered Iron Bearings
- Sintered Auto Parts        ■ Sintered Machine Tools

### FU-IB Flanged Bush



Product No.	d	D	D1	T	L
	G7	s7	js13	js13	js13
FU-IB0306	3	6	9	1.5	4-5-6-10
FU-IB0408	4	8	12	2	4-5-6-8-10-12
FU-IB0509	5	9	13	2	4-5-8
FU-IB0610	6	10	14	2	5-6-10-12-15-16
FU-IB0711	7	11	15	2	5-8-10
FU-IB0812	8	12	16	2	8-10-12-15-16-20
FU-IB0914	9	14	19	2.5	6-10-14
FU-IB1013	10	13	17	2.5	10-16-20
FU-IB1014	10	14	18	2	10-15-20
FU-IB1015	10	15	21	3	8-10-15-16-20
FU-IB1016	10	16	22	3	8-10-16
FU-IB1215	12	15	21	3	12-16-20
FU-IB1216	12	16	18	2	12-16-20
FU-IB1217	12	17	23	3	12-16-20-25
FU-IB1218	12	18	24	3	8-12-20
FU-IB1418	14	18	22	2	14-18-22
FU-IB1420	14	20	26	3	10-14-15-18-20-22-28
FU-IB1519	15	19	25	3	16-20-25
FU-IB1520	15	20	25	3	15-20-25-30
FU-IB1521	15	21	27	3	10-15-16-20-25-32
FU-IB1620	16	20	27	3	16-20-25
FU-IB1622	16	22	28	3	12-15-16-20-25-30-32
FU-IB1822	18	22	26	2	18-22-28

Product No.	d G7	D s7	D1 js13	T js13	L js13
FU-IB1824	18	24	30	3	12-18-22-28-30
FU-IB1825	18	25	32	4	20-25-30-35
FU-IB2024	20	24	30	3	16-20-25
FU-IB2026	20	26	32	3	15-16-20-25-30-32
FU-IB2028	20	28	35	4	20-25-30-35
FU-IB2227	22	27	32	3	18-22-28
FU-IB2228	22	28	34	3	15-20-25-30
FU-IB2229	22	29	36	4	18-22-28-36
FU-IB2530	25	30	39	4	20-25-32
FU-IB2532	25	32	39	4	20-25-30-32
FU-IB2833	28	33	38	3	22-28-36
FU-IB2836	28	36	44	4	20-22-25-28-30-35-36-40
FU-IB3038	30	38	46	4	20-25-30
FU-IB3040	30	40	48	4	25-30-35-40
FU-IB3238	32	38	46	4	20-25-32
FU-IB3240	32	40	48	4	20-25-28-30-32-35-36-40
FU-IB3545	35	45	55	5	25-30-35-40
FU-IB3642	36	42	48	4.5	22-28-36
FU-IB3848	38	48	58	5	25-35
FU-IB4046	40	46	52	5	25-32-40
FU-IB4050	40	50	60	5	25-30-32-35-40-50
FU-IB4252	42	52	62	5	30-40-50
FU-IB4551	45	51	57	3	28-36-45
FU-IB4555	45	55	65	5	35-45-55
FU-IB4556	45	56	67	5.5	28-36-45
FU-IB5056	50	56	62	3	32-40-50
FU-IB5060	50	60	70	5	32-40-50
FU-IB6070	60	70	80	5	50-60

Plant Add: Dayun Industrial Zone, Jia Shan City,  
Zhejiang Province, P.R. China.  
Office Add: Room 405, No. 49 Huaishu Street,  
Chengdu, 610031 P.R. China.

**Contat Us**

[www.cli-industrial.com](http://www.cli-industrial.com)  
[www.clibearings.com](http://www.clibearings.com)  
[sales@cli-industrial.com](mailto:sales@cli-industrial.com)  
[sales@clibearings.com](mailto:sales@clibearings.com)



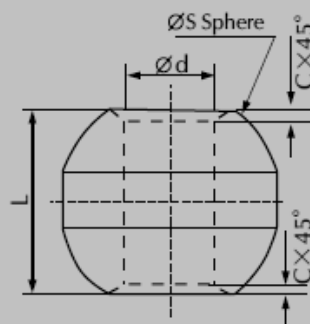
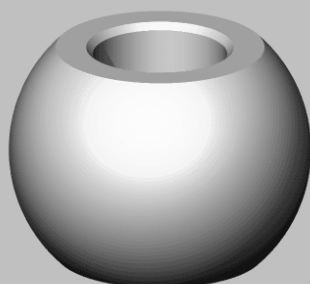
**CLI INDUSTRIAL CO., LTD.**

ISO 9001:2000 Standardized  
Sliding Bearing Factory

## Sintered Oil-impregnated Bearings

- Sintered Bronze Bearings
- Sintered Iron Bearings
- Sintered Auto Parts
- Sintered Machine Tools

### FU-IC Spherical Bush



Product No.	d H7	S Sphere	L js13
FU-IC0408	4	10	8
FU-IC0509	5	12	9
FU-IC0611	6	14	11
FU-IC0712	7	16	12
FU-IC0813	8	18	13
FU-IC0914.5	9	20	14.5
FU-IC1016	10	22	16
FU-IC1216	12	23	16

Plant Add: Dayun Industrial Zone, Jia Shan City,  
Zhejiang Province, P.R. China.

Office Add: Room 405, No. 49 Huaishu Street,  
Chengdu, 610031 P.R. China.

**Contact Us**

[www.cli-industrial.com](http://www.cli-industrial.com)  
[www.clibearings.com](http://www.clibearings.com)  
[sales@cli-industrial.com](mailto:sales@cli-industrial.com)  
[sales@clibearings.com](mailto:sales@clibearings.com)



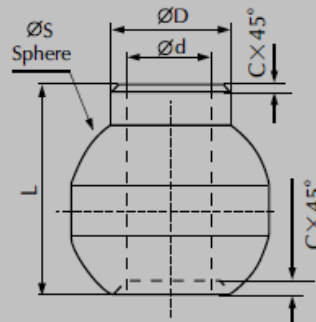
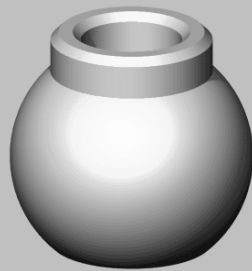
**CLI INDUSTRIAL CO., LTD.**

ISO 9001:2000 Standardized  
Sliding Bearing Factory

## Sintered Oil-impregnated Bearings

- Sintered Bronze Bearings    ■ Sintered Iron Bearings
- Sintered Auto Parts        ■ Sintered Machine Tools

### FU-ID Spherical Bush with Collar



Product No.	d G7	D	S Sphere	L js13
FU-ID0410	4	6	10	10
FU-ID0511	5	8	12	11
FU-ID0613	6	9	14	13
FU-ID0714	7	11	16	14
FU-ID0816	8	13	18	16
FU-ID0917	9	14	20	17
FU-ID1018	10	15	22	18
FU-ID1218	12	18	23	18

Plant Add: Dayun Industrial Zone, Jia Shan City,  
Zhejiang Province, P.R. China.  
Office Add: Room 405, No. 49 Huaishu Street,  
Chengdu, 610031 P.R. China.

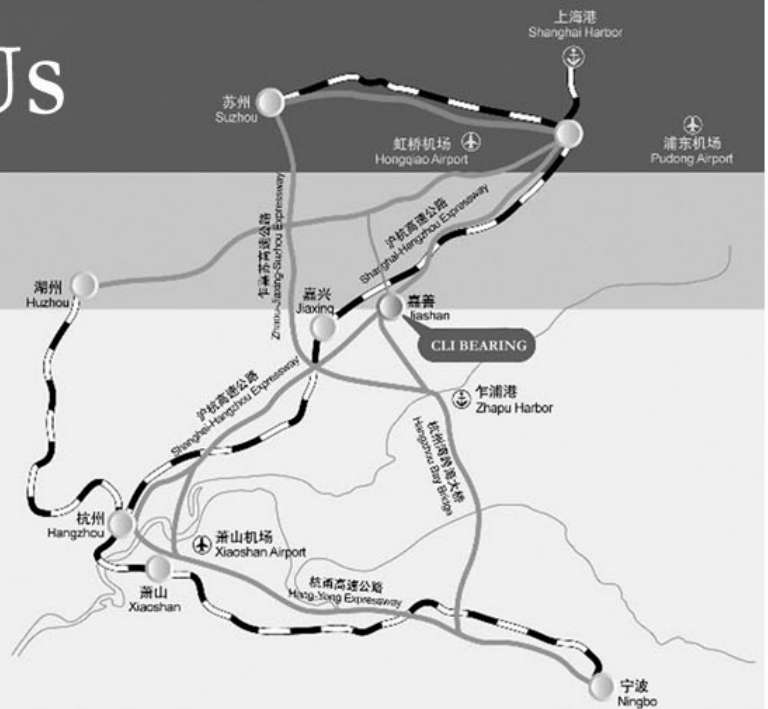
## Contat Us

[www.cli-industrial.com](http://www.cli-industrial.com)  
[www.clibearings.com](http://www.clibearings.com)  
[sales@cli-industrial.com](mailto:sales@cli-industrial.com)  
[sales@clibearings.com](mailto:sales@clibearings.com)





## Contact Us



### CLI Industrial Co., Ltd.

- Plant Add: Dayun Industrial Zone, Jiashan City, Zhejiang Province, China.
- Company Add: Room 405, No.49 Huaishu Street, Chengdu, 610013, China.
- Tel: 0086-28-86693910
- Fax: 0086-28-86250130
- Email: sales@cli-industrial.com
- Website: www.cli-industrial.com